

Tire Recycling Collection

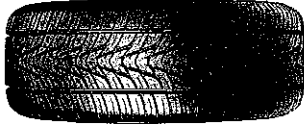
Berrien County Residents Only

May 11, Thursday, 3 p.m. - 7 p.m.

May 12, Friday, 8:30 a.m. - 11 a.m.

County Road Commission, 2860 E. Napier Ave., Benton Harbor, corner of Napier & Yore Ave. Enter at 3rd gate from the corner.

Follow the event signs.



Tires Accepted & Fees - car/small truck tires (\$1 each), car/small truck tires on rim (\$2 each), semi-truck tires (\$5 each), tractor/oversize tires (\$10 each) from RESIDENTS only. Businesses are not permitted to participate in this event.

Fees due at event. Cash or check.

Coordinated by Berrien County Parks Department

Friends of New Troy Electronics & Tire Recycling Event

Berrien County Residents Only

July 15, Saturday, 9 a.m. - 2 p.m.

New Troy Community Center, 13372 California Rd., New Troy

Tires Accepted & Fees - car/small truck tires (\$1 each), car/small truck tires on rim (\$2 each), semi-truck tires (\$5 each), tractor/oversize tires (\$10 each) from RESIDENTS only. Businesses are not permitted to participate in this event.

Electronics Accepted & Fees - computers, monitors (\$10 each), televisions (\$20 each), small & large appliances, printers, anything with a cord or that is battery operated. Complete list of accepted electronics on back of flyer. Fee only on monitors and TVs.

Fees due at event. Cash or check.

Contact 269-426-3002

Clean Sweep Ag Pesticide Collection

Michigan Farmers, greenhouse operators, golf course managers, and other users of pesticides can safely dispose of unwanted pesticides through the Clean Sweep program June 28 and July 26. Visit www.berriencounty.org/recycle for more information and download a registration form. Registration due 2-weeks prior to event.



Contact:

Berrien County Parks Department
269-983-7111 x8234, jadams@berriencounty.org

Learn more about local recycling options and view the Berrien County Recycling Guide at www.berriencounty.org/recycle

Medication Disposal

Prevent misuse and abuse of medications and protect environmental health by bringing unwanted pills and med waste to these special collections or drop-off points.

Pills are accepted in original pill bottle or dumped together in a bag.

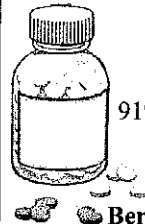
PILLS, LIQUID MEDS, AEROSOLS, NEEDLES/SHARPS

Household Chemical Collections: list of events on back of flyer.

PILLS & LIQUID MEDS

Berrien County Sheriff's Department

919 Port St., St. Joseph. Mon. - Fri. 8 a.m. - 5 p.m.



PILLS ONLY

Berrien Springs Oronoko Twp Police Department

4411 E. Snow Rd., Berrien Springs. Mon. - Fri. 9 a.m. - 12 Noon & 1 p.m. - 4 p.m.

Buchanan City Police Department

720 E. Front St, Buchanan. Mon. - Fri. 8 a.m. - 4:30 p.m.

Chikaming Township Police Department

13535 Red Arrow Hwy, Harbert. Mon. - Fri. 8:30 a.m. - 4:30 p.m.

Coloma Charter Township Police Department

4919 Paw Paw Lake Rd., Coloma. Mon. - Fri. 9 a.m. - 5 p.m.

Lakeland Community Hospital Pharmacy, Niles

31 N. St. Joseph St., Niles. Mon. - Fri. 8 a.m. - 5:30 p.m.

Lakeland Community Hospital Pharmacy, St. Joseph

1234 Napier Ave., St. Joseph. Open 24 hours per day.

Lakeland Pharmacy Shoppe

3900 Hollywood Rd., St. Joseph. Mon. - Fri. 8:30 a.m. - 4:30 p.m.

New Buffalo Police Department

224 W. Buffalo St., New Buffalo. Mon. - Fri. 8 a.m. - 4 p.m.

Niles Law Enforcement Complex

1600 Silverbrook Ave., Niles. Open 24 hours per day.

Walgreens

1260 Hilltop Rd., St. Joseph, Open 24 hours per day
907 S. 11th St., Niles, Open 24 hours per day

Watervliet City Police Department

158 Pleasant St., Watervliet. Mon. - Fri. 8:30 a.m. - 5 p.m.

Permanent pill collection boxes are coordinated by the Berrien County Health Department Substance Abuse Prevention Services, local law enforcement, and/or host collection sites.

SHARPS/NEEDLES

Household Chemical Collection Events, see list on back of flyer.

Republic Services, mail-in disposal program,
855-737-7871, www.republicsharps.com

Stericycle, mail-in disposal program,
847-943-6817,
www.stericycle.com/consumer-needle-disposal

