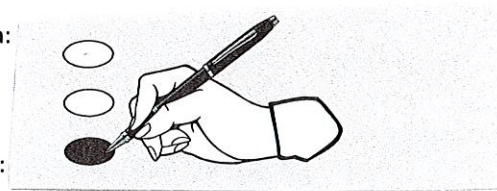


PRIMARY ELECTION

TO VOTE: Completely darken the oval opposite each choice as shown:

--OR--

TO VOTE: Completely darken the box opposite each choice as shown:



IMPORTANT: To mark your ballot, use only a black or blue ink pen. **DO NOT USE ANY OTHER INK COLOR!**

PARTISAN SECTION: There may be multiple party sections on the ballot. Select the party section of your choice. **YOU MAY VOTE IN ONE PARTY SECTION ONLY; YOU CANNOT "SPLIT YOUR TICKET." IF YOU VOTE IN MORE THAN ONE PARTY SECTION, YOUR PARTISAN BALLOT WILL BE REJECTED.**

DO NOT vote for more candidates than indicated under each office title.

WRITE-IN CANDIDATES: To vote for a candidate whose name is not printed on the ballot, write or place the name of that candidate in the blank space provided and completely darken the voting target area. Do not cast a write-in vote for a candidate whose name is already printed on the ballot for that office.

CHECK BOTH SIDES OF BALLOT: This ballot has two sides. Be certain to check the reverse side of the ballot.

WHEN YOU HAVE COMPLETED VOTING: Place the ballot in the secrecy sleeve so that votes cannot be seen and the numbered stub is visible. Return the ballot to the election official stationed at the tabulator. (If voting by absentee ballot, follow the instructions provided by the clerk for returning the ballot.)